

Adaptive Employee Experience Guide!

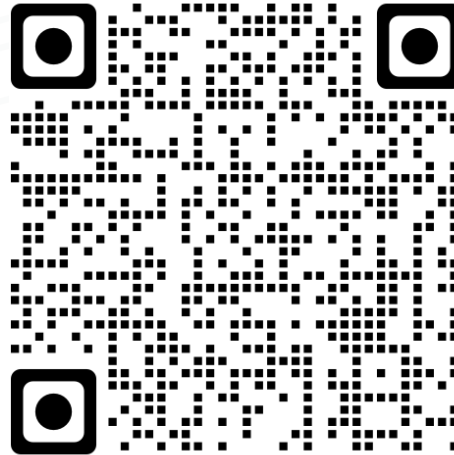
Step-by-step guide for transitioning to the new *isolved* interface.

Android

Please ensure you're using Google Chrome as your browser for best results

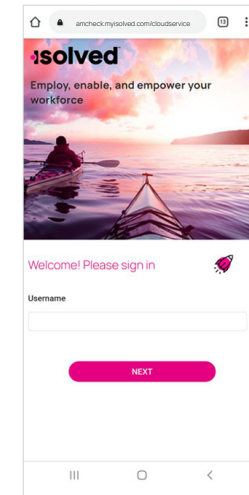
1 Step 1

With phone, please take an image of QR code* to open home page.



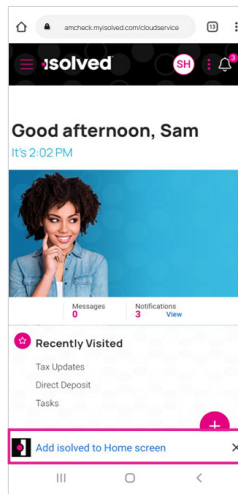
2 Step 2

Log into the homepage with your Username and Password.



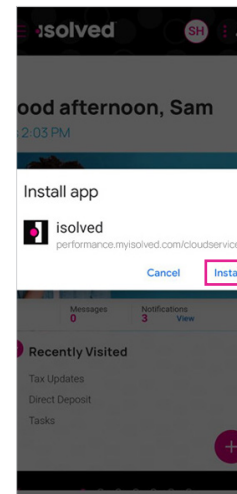
3 Step 3

Once logged in, you will be prompted at the bottom to install the app to your Home Screen. Tap the notification to open the install screen.



4 Step 4

Select the "Install" link from the list of options.



5 Step 5

The isolated "app" will be added to your mobile home screen for simplified access.



isolved

copyright 2021 • www.isolvedhcm.com

*If QR Code does not work, please enter **amcheck.myisolved.com/cloudservice** into browser.

Transforming employee experience for a better today and a better tomorrow.